

YOUNG LIBERALS
STYLE GUIDE 2019

1. INTRODUCTION

This style guide will allow Young Liberals to be more consistent when applying the YL brand, which is similar but distinct from the main party's guidelines.

It includes a colour palette, as well as instructions on how best to use Open Sans, the party's font of choice.

Adopting these guidelines will help your branch be more in-line with the Young Liberals style.

2. COLOURS



Lib Dem Orange
#FAA61A, (RGB: 250, 168, 30)
Primary colour



Young Liberals Magenta
#E6007E, (RGB: 230, 5, 129)
Highlight colour



Jet Black
#000000, (RGB: 0, 0, 0)
Tertiary colour

YL Magenta used sparingly to break up Lib Dem Orange

***"TACKLING ECONOMIC DEPRIVATION
AND SOCIAL INJUSTICE.
THIS SHOULD BE ONE OF OUR LEITMOTIFS
GOING FORWARD."***

Liberal
Democrats



Lib Dem Orange the predominant colour for backgrounds

3. *TEXT*

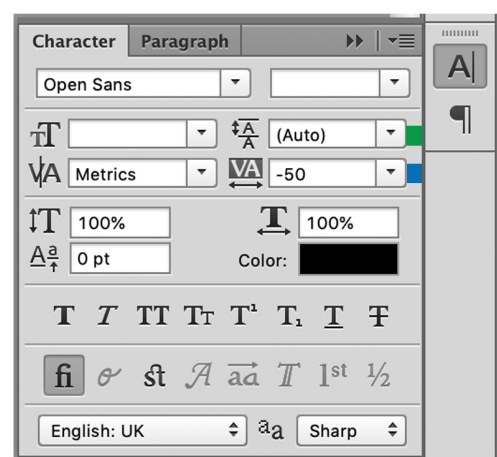
USE EXTRABOLD ITALIC FOR HEADLINES, IN ALL CAPS

Use bold non-italic for body text on graphics

Use regular for body text on printed literature

Set the **tracking** (space between letters) to a setting lower than default to make text look more streamlined.

Similarly, make sure **leading** space (space between lines) is narrow enough that paragraphs look neatly condensed together.



Lorem ipsum dolor sit amet,
consectetur adipiscing elit, sed
do eiusmod tempor incididunt
ut labore et dolore magna
aliqua.

NOT LIKE THIS.

The leading space (between lines) is far too large and makes the text look unstructured. The tracking (space between characters) is also too much.

Lorem ipsum dolor sit amet,
consectetur adipiscing elit, sed do
eiusmod tempor incididunt ut
labore et dolore magna aliqua.

MUCH BETTER.

4. OTHER FEATURES

Blobs

These perfect circles of YL Magenta break up the block colour of the backgrounds to graphics, and are used particularly around photographs of people to emphasise them. Use sparingly so they're just a highlight rather than a predominant figure.

Hero Graphics

These are gradient mapped images of key figures in the party, which can be put in a graphic or on a leaflet. They are in black and white to make them stand out against the backdrop of Lib Dem Orange and YL Magenta.

YL Logo

This should be used either on its own or with a simple two-line written "Young Liberals" in Open Sans Extrabold Italic. Only use the official federal or state versions. Do not stretch it out of proportion or add your own colorations without first talking to the Federal Communications Officer.

**YL Magenta blobs
to highlight the hero
graphic**



**Dynamic pose in hero
graphic to make the
person stand out**

***COMPILED BY HARRY SAMUELS
CORRECT AS OF 2019***